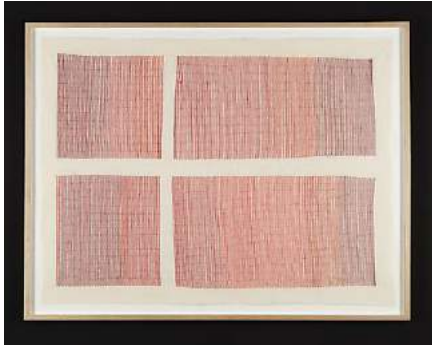


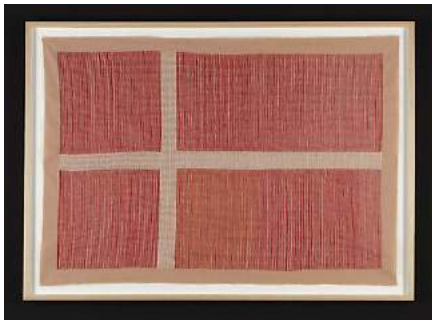
GALLERI
TOM
CHRISTOFFERSEN



Gudrun Hasle
Flag (1), 2011-16
Embroidery on textile
80.5 x 103 cm
DKK20,000



Gudrun Hasle
Flag (5), 2011-16
Embroidery on textile
80 x 86.5 cm
DKK20,000

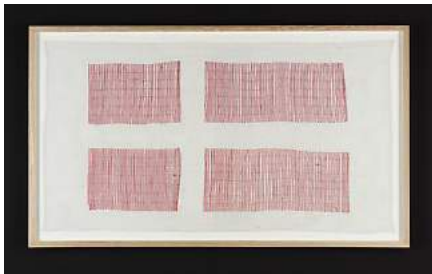


Gudrun Hasle
Flag (13), 2011-16
Embroidery on textile
70.5 x 97.5 cm
DKK20,000

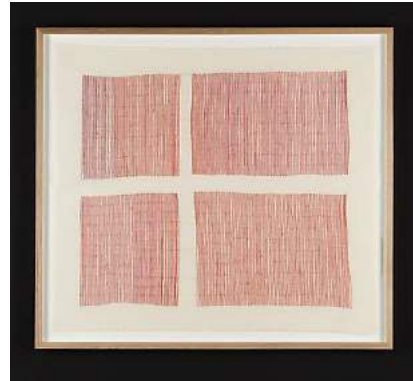


Gudrun Hasle
Flag (14), 2011-16
Embroidery on textile
68 x 86.5 cm
DKK20,000

GALLERI
TOM
CHRISTOFFERSEN



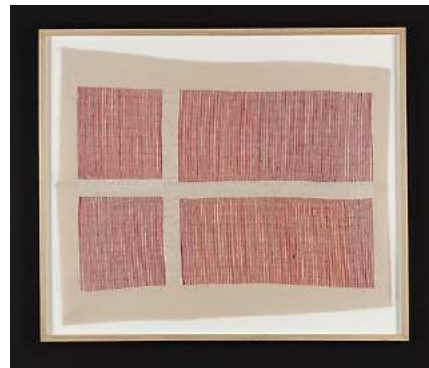
Gudrun Hasle
Flag (2), 2011-16
Embroidery on textile
58 x 98 cm
DKK18,000



Gudrun Hasle
Flag (3), 2011-16
Embroidery on textile
72.5 x 80 cm
DKK18,000

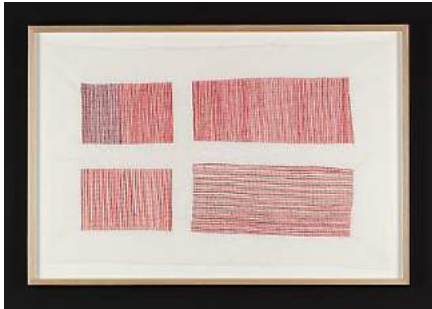


Gudrun Hasle
Flag (4), 2011-16
Embroidery on textile
69 x 89 cm
DKK18,000

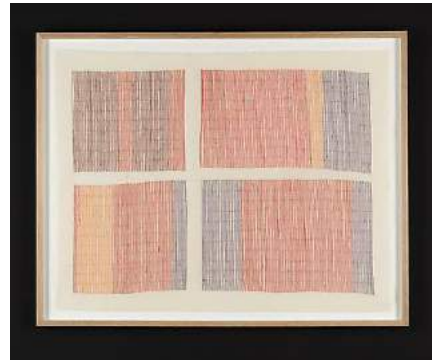


Gudrun Hasle
Flag (6), 2011-16
Embroidery on textile
72 x 84.5 cm
DKK18,000

GALLERI
TOM
CHRISTOFFERSEN



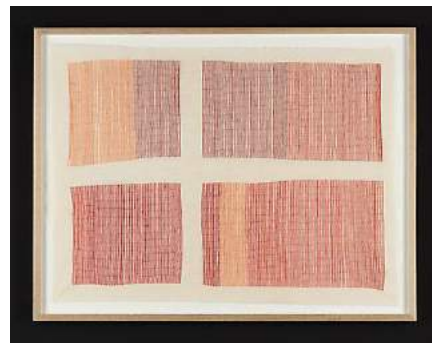
Gudrun Hasle
Flag (7), 2011-16
Embroidery on textile
63 x 92 cm
DKK18,000



Gudrun Hasle
Flag (8), 2011-16
Embroidery on textile
68 x 86 cm
DKK18,000

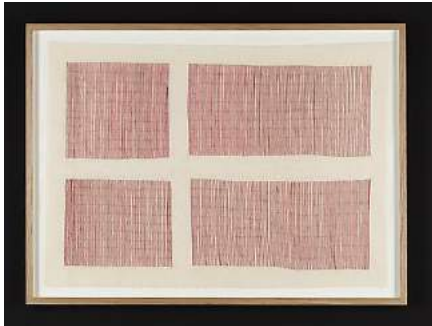


Gudrun Hasle
Flag (9), 2011-16
Embroidery on textile
71 x 79.5 cm
DKK18,000

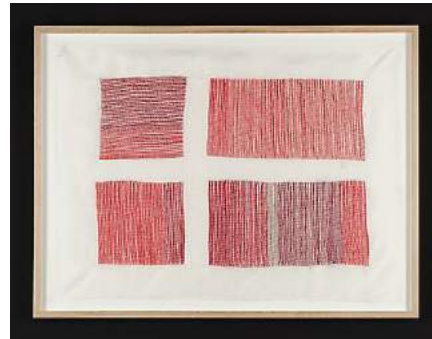


Gudrun Hasle
Flag(10), 2011-16
Embroidery on textile
65.5 x 86 cm
DKK18,000

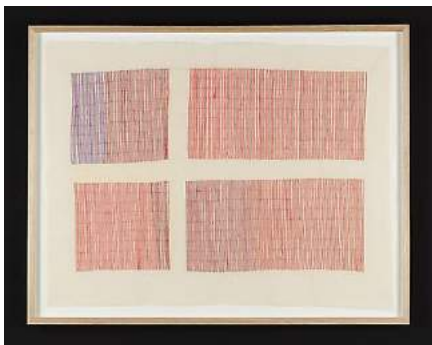
GALLERI
TOM
CHRISTOFFERSEN



Gudrun Hasle
Flag (11), 2011-16
Embroidery on textile
62.5 x 84 cm
DKK18,000



Gudrun Hasle
Flag (12), 2011-16
Embroidery on textile
66 x 87 cm
DKK18,000

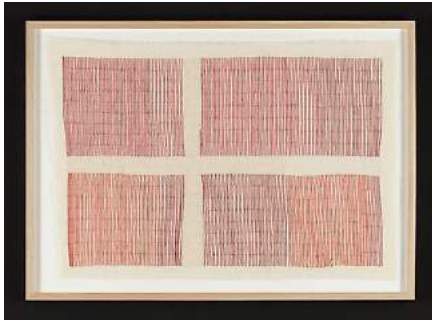


Gudrun Hasle
Flag (15), 2011-16
Embroidery on textile
97 x 80 cm
DKK18,000



Gudrun Hasle
Flag (16), 2011-16
Embroidery on textile
51 x 71 cm
DKK14,000

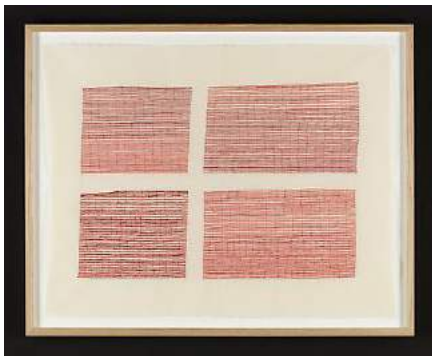
GALLERI
TOM
CHRISTOFFERSEN



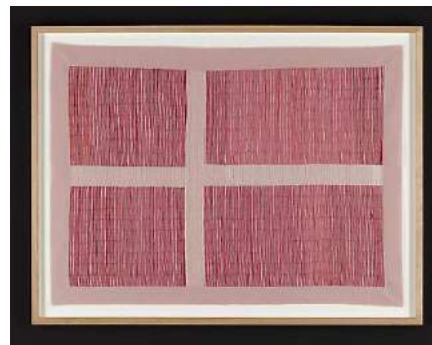
Gudrun Hasle
Flag (17), 2011-16
Embroidery on textile
53.5 x 74.5 cm
DKK14,000



Gudrun Hasle
Flag (18), 2011-16
Embroidery on textile
60.5 x 71.5 cm
DKK14,000



Gudrun Hasle
Flag (19), 2011-16
Embroidery on textile
60 x 75 cm
DKK14,000

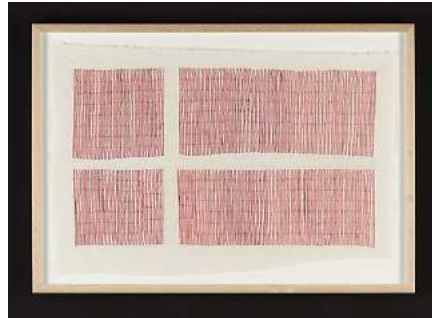


Gudrun Hasle
Flag (20), 2011-16
Embroidery on textile
61.5 x 80.5 cm
DKK14,000

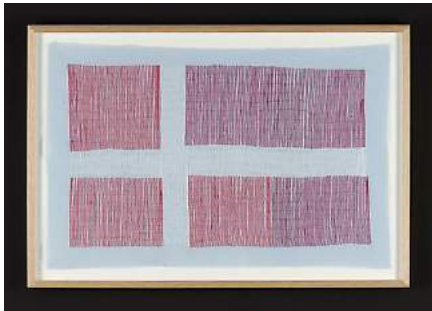
GALLERI
TOM
CHRISTOFFERSEN



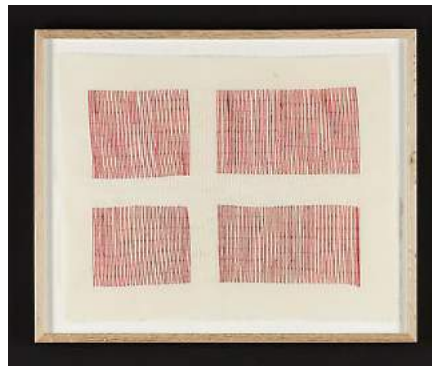
Gudrun Hasle
Flag (22), 2011-16
Embroidery on textile
61 x 72.5 cm
DKK14,000



Gudrun Hasle
Flag (21), 2011-16
Embroidery on textile
50 x 71 cm
DKK14,000

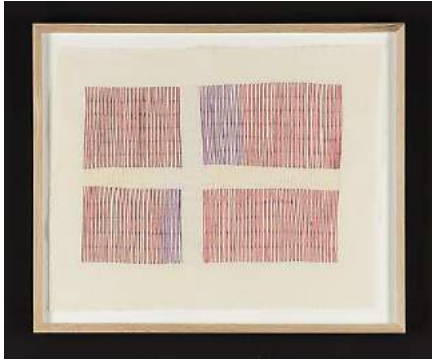


Gudrun Hasle
Flag (23), 2011-16
Embroidery on textile
52.5 x 76 cm
DKK14,000

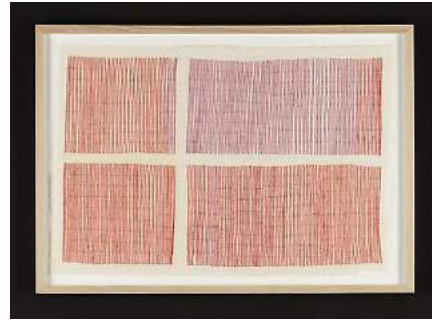


Gudrun Hasle
Flag (31), 2011-16
Embroidery on textile
51 x 62 cm
DKK14,000

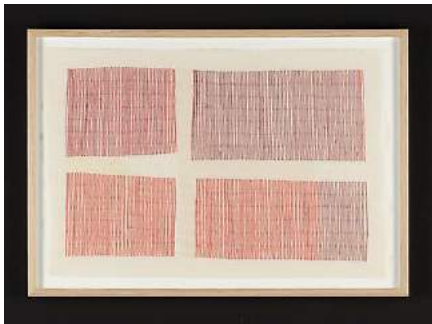
GALLERI
TOM
CHRISTOFFERSEN



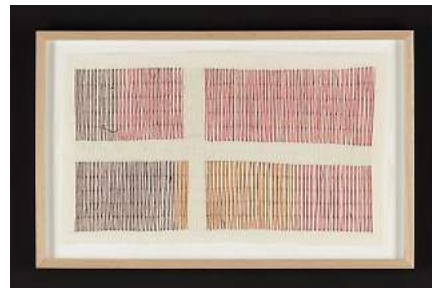
Gudrun Hasle
Flag (28), 2011-16
Embroidery on textile
51 x 61.5 cm
DKK14,000



Gudrun Hasle
Flag (35), 2011-16
Embroidery on textile
48.5 x 68 cm
DKK14,000

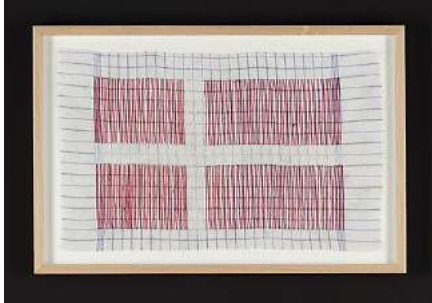


Gudrun Hasle
Flag (33), 2011-16
Embroidery on textile
50.5 x 71.5 cm
DKK14,000

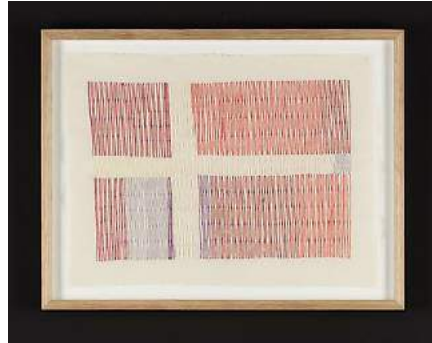


Gudrun Hasle
Flag (24), 2011-16
Embroidery on textile
37.5 x 58.5 cm
DKK9,000

GALLERI
TOM
CHRISTOFFERSEN



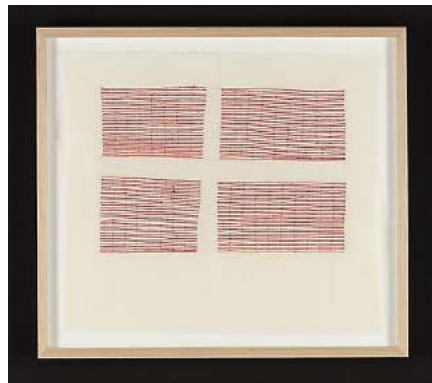
Gudrun Hasle
Flag (25), 2011-16
Embroidery on textile
37.5 x 56 cm
DKK9,000



Gudrun Hasle
Flag (26), 2011-16
Embroidery on textile
34.5 x 51 cm
DKK9,000



Gudrun Hasle
Flag (27), 2011-16
Embroidery on textile
48.5 x 57.5 cm
DKK9,000

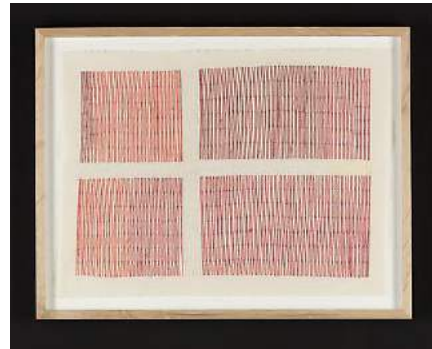


Gudrun Hasle
Flag (29), 2011-16
Embroidery on textile
48 x 54 cm
DKK9,000

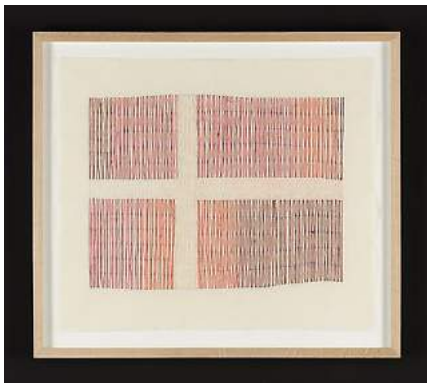
GALLERI
TOM
CHRISTOFFERSEN



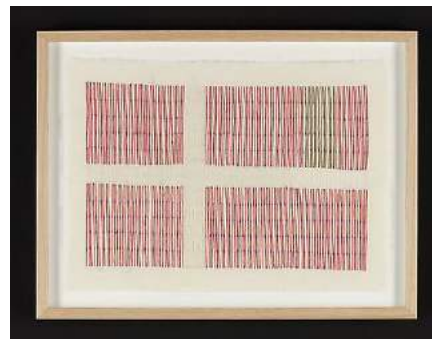
Gudrun Hasle
Flag (30), 2011-16
Embroidery on textile
43 x 59 cm
DKK9,000



Gudrun Hasle
Flag (32), 2011-16
Embroidery on textile
46 x 59 cm
DKK9,000

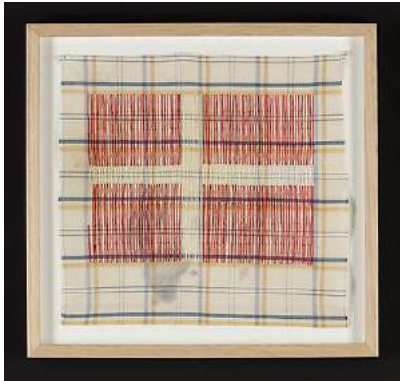


Gudrun Hasle
Flag (34), 2011-16
Embroidery on textile
50.5 x 56.5 cm
DKK9,000

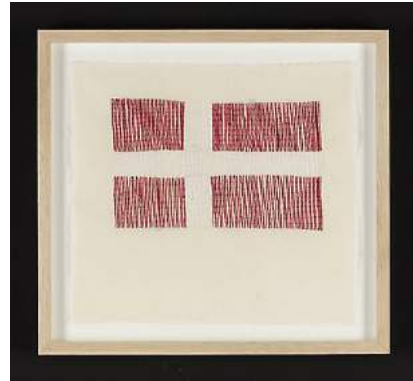


Gudrun Hasle
Flag (36), 2011-16
Embroidery on textile
37.5 x 44.5 cm
DKK7,000

GALLERI
TOM
CHRISTOFFERSEN



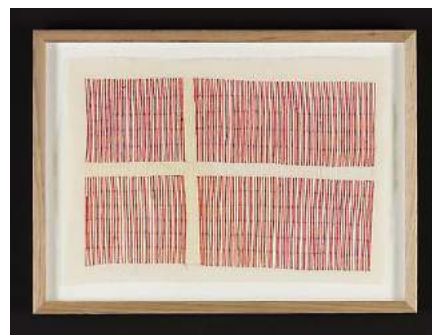
Gudrun Hasle
Flag (37), 2011-16
Embroidery on textile
37.5 x 40 cm
DKK7,000



Gudrun Hasle
Flag (38), 2011-16
Embroidery on textile
37 x 40 cm
DKK7,000



Gudrun Hasle
Flag (39), 2011-16
Embroidery on textile
45.5 x 35 cm
DKK7,000



Gudrun Hasle
Flag (40), 2011-16
Embroidery on textile
35.5 x 47.5 cm
DKK7,000

GALLERI
TOM
CHRISTOFFERSEN



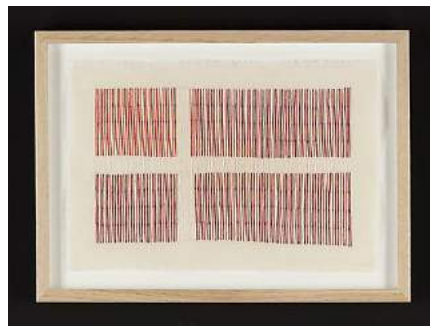
Gudrun Hasle
Flag (41), 2011-16
Embroidery on textile
35 x 40 cm
DKK7,000



Gudrun Hasle
Flag (42), 2011-16
Embroidery on textile
34.5 x 37.5 cm
DKK7,000

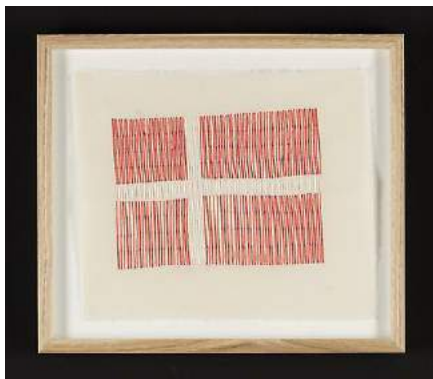


Gudrun Hasle
Flag (43), 2011-16
Embroidery on canvas
32 x 37.5 cm
DKK7,000

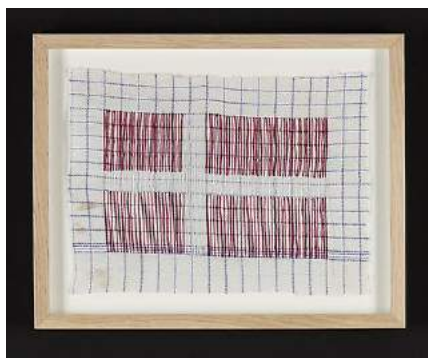


Gudrun Hasle
Flag (44), 2011-16
Embroidery on canvas
32 x 44 cm
DKK7,000

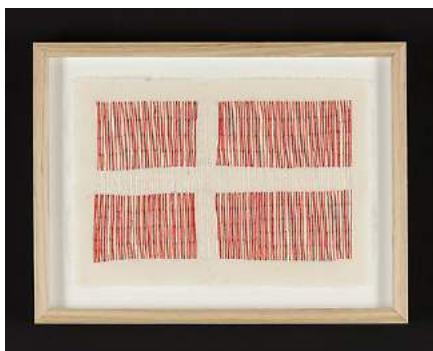
GALLERI
TOM
CHRISTOFFERSEN



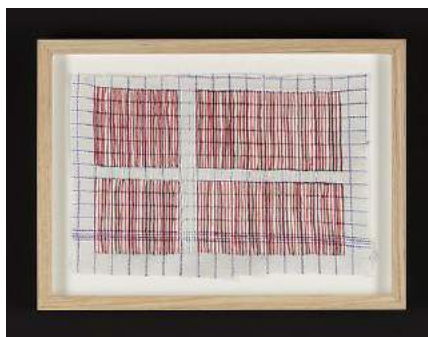
Gudrun Hasle
Flag (45), 2011-16
Embroidery on textile
33 x 38 cm
DKK7,000



Gudrun Hasle
Flag (46), 2011-16
Embroidery on textile
30 x 37.5 cm
DKK7,000



Gudrun Hasle
Flag (47), 2011-16
Embroidery on textile
28 x 37 cm
DKK5,000

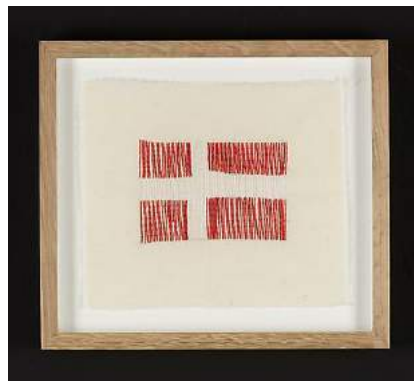


Gudrun Hasle
Flag (48), 2011-16
Embroidery on textile
27.5 x 37.5 cm
DKK5,000

GALLERI
TOM
CHRISTOFFERSEN



Gudrun Hasle
Flag (49), 2011-16
Embroidery on textile
27.5 x 34 cm
DKK5,000



Gudrun Hasle
Flag (50), 2011-16
Embroidery on textile
27 x 30 cm
DKK5,000



Gudrun Hasle
Flag (51), 2011-16
Embroidery on textile
24 x 32.5 cm
DKK5,000